

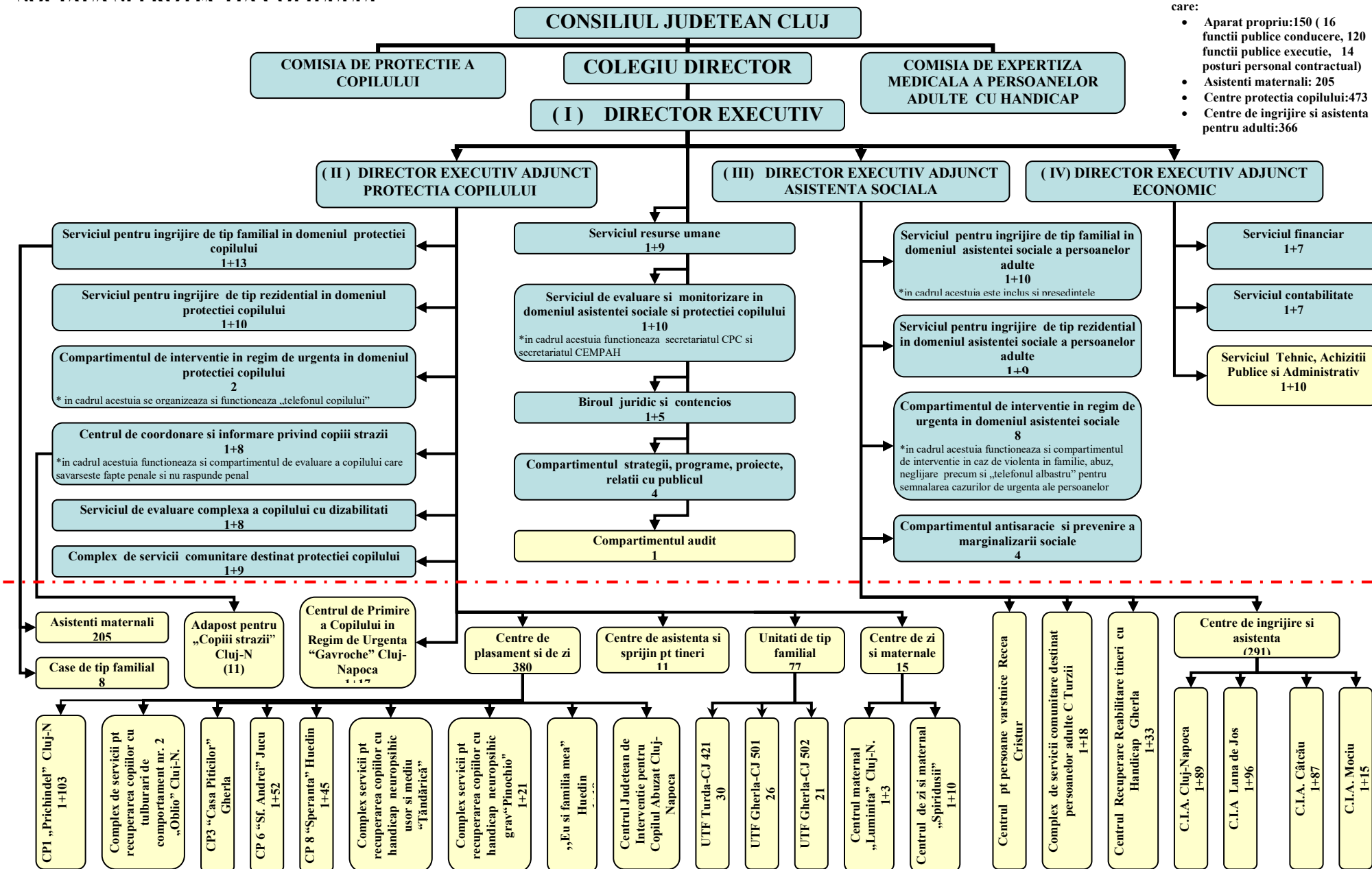
CONSILIUL JUDETEAN CLUJ
DIRECTIA GENERALA DE ASISTENTA
SOCIALA SI PROTECTIA COPILULUI

Aprobat,
PRESEDINTE
Marius Petre Nicoara

Anexa nr. 25
 La Hotararea nr. 74/2006

Total posturi DGASPC: **1194** din care:

- Aparat propriu: 150 (16 functii publice conducere, 120 functii publice executie, 14 posturi personal contractual)
- Asistenti maternali: 205
- Centre protectia copilului: 473
- Centre de ingrijire si asistenta pentru adulti: 366



SE APROBA:
PRESEDINTE,
Marius-Petre Nicoara

STAT DE FUNCTII
valabil de la 15.03.2006

I. DIRECTIE

Nr. Crt.	Funcție de conducere	Funcția de executie	Clasa/studii	Grad profesional	Treapta	Numar Posturi
I. CONDUCERE						
1	Director executiv		I	superior	1	1
2	Director executiv adjunct		I	superior	2	1
3	Director executiv adjunct		I	superior	1	1
4	Director executiv adjunct		I	superior	1	1
	TOTAL					4

II. SERVICIUL RESURSE UMANE

1	Sef serviciu		I	superior	3	1
2		Consilier	I	superior	2	1
3		Consilier	I	principal	3	1
4		Consilier	I	asistent	1	1
5		Consilier	I	asistent	3	1
6		Referent de specialitate	II	superior	1	1
7		Referent	III	superior	1	1
8		Referent	III	superior	3	1
9		Referent	III	superior	2	1
10		Referent	III	superior	3	1
	TOTAL					10

III. SERVICIUL DE EVALUARE SI MONITORIZARE IN DOMENIUL ASISTENTEI SOCIALE SI PROTECTIA COPILULUI

1	Sef serviciu		I	superior	3	1
2		Consilier	I	superior	2	1
3		Consilier	I	superior	3	1
4		Consilier	I	principal	1	1
5		Consilier	I	principal	1	1
6		Consilier juridic	I	superior	2	1
7		Consilier	I	superior	3	1

8		Consilier	I	asistent	3	1
9		Consilier	I	principal	1	1
10		Referent	III	superior	2	1
11		Referent	III	principal	1	1
	Total					11

IV BIROU JURIDIC CONTENCIOS

1	Sef birou		I	superior	2	1
2		Consilier juridic	I	superior	1	1
3		Consilier juridic	I	principal	1	1
4		Consilier juridic	I	principal	1	1
5		Consilier juridic	I	principal	3	1
6		Consilier juridic	I	asistent	3	1
	TOTAL					6

V COMPARTIMENT STRATEGII, PROGRAME, PROIECTE, RELATI CU PUBLICUL

1		Consilier	I	principal	1	1
3		Consilier	I	principal	1	1
2		Consilier	I	asistent	1	1
4		Consilier	I	deb	0	1
	TOTAL					4

VI COMPARTIMENTUL CONTROL FINANCIAR INTERN

1		Inspector specialitate	S	1A		1
	TOTAL					1

VII SERVICIUL PENTRU INGRIJIRE TIP FAMILIAL IN DOMENIUL PROTECTIEI COPILULUI

1	Sef serviciu		I	superior	3	1
2		Consilier	I	principal	1	1
3		Consilier	I	principal	1	1
4		Consilier	I	principal	1	1
5		Consilier	I	principal	1	1
6		Consilier	I	principal	1	1
7		Consilier	I	principal	3	1
8		Consilier	I	principal	3	1
9		Consilier	I	principal	3	1
10		Consilier	I	asistent	3	1
11		Consilier	I	asistent	3	1
12		Consilier	I	asistent	3	1
13		Consilier	I	asistent	2	1
14		Consilier	I	deb	0	1
	TOTAL					14

VIII SERVICIUL PENTRU INGRIJIRE TIP REZIDENTIAL IN DOMENIUL PROTECTIEI COPILULUI

1	Sef serviciu		I	principal	1	1
2		Consilier	I	superior	3	1

3		Consilier	I	principal	1	1
4		Consilier	I	principal	1	1
5		Consilier	I	principal	1	1
6		Consilier	I	principal	1	1
7		Consilier	I	principal	1	1
8		Consilier	I	principal	1	1
9		Consilier	I	principal	3	1
10		Consilier	I	asistent	1	1
11		Consilier	I	deb	0	1
TOTAL						11

IX COMPARTIMENT INTERVENTIE IN REGIM DE URGENTA IN DOMENIUL PROTECTIEI COPILULUI

1		Consilier	I	principal	1	1
2		Consilier	I	asistent	1	1
TOTAL						2

X CENTRUL DE COORDONARE SI INFORMARE PRIVIND PROTECTIA COPILOR STRAZII

1	Sef serviciu		I	principal	1	1
2		Consilier	I	superior	3	1
3		Consilier juridic	I	superior	2	1
4		Consilier	I	principal	1	1
5		Consilier	I	principal	3	1
6		Consilier	I	asistent	1	1
7		Consilier	I	asistent	1	1
8		Consilier	I	deb		1
TOTAL						8

XI SERVICIUL DE EVALUARE COMPLEXA A COPILULUI CU DIZABILITATI

1	Sef serviciu		I	principal	1	1
2		Consilier	I	superior	3	1
3		Consilier	I	superior	3	1
4		Consilier	I	principal	1	1
5		Consilier	I	superior	1	1
6		Consilier	I	asistent	1	1
7		Consilier	I	deb		1
8		Consilier	I	deb		1
9		Medic specialist	S			1
TOTAL						9

XII COMPLEX DE SERVICII COMUNITARE DESTINAT PROTECTIEI COPILULUI

1	Sef serviciu		I	principal	1	1
2		Consilier	I	principal	3	1
3		Consilier	I	principal	3	1
4		Consilier	I	principal	3	1

5		Consilier	I	principal	3	1
6		Consilier	I	principal	3	1
7		Consilier	I	principal	3	1
8		Consilier	I	asistent	3	1
9		Consilier	I	asistent	3	1
10		Referent	III	asistent	3	1
	TOTAL					10

XIII SERVICIUL PENTRU INGRIJIRE TIP FAMILIAL IN DOMENIUL ASISTENTEI SOCIALE A PERSOANELOR ADULTE

1	Sef serviciu		I	superior	3	1
2		Consilier	I	superior	3	1
3		Consilier	I	superior	3	1
4		Consilier	I	principal	1	1
5		Consilier	I	principal	1	1
6		Consilier	I	asistent	1	1
7		Consilier	I	asistent	1	1
8		Consilier	I	deb		1
9		Referent	III	superior	2	1
10		Referent	III	superior	2	1
11		Medic Primar	S			1
	TOTAL					11

XIV SERVICIUL PENTRU INGRIJIRE TIP REZIDENTIAL IN DOMENIUL ASISTENTEI SOCIALE A PERSOANELOR ADULTE

1	Sef serviciu		I	superior	1	1
2		Consilier	I	superior	3	1
3		Consilier	I	principal	1	1
4		Consilier	I	principal	1	1
5		Consilier	I	asistent	1	1
6		Consilier	I	asistent	1	1
7		Consilier	I	asistent	1	1
8		Consilier	I	asistent	1	1
9		Consilier	I	deb	0	1
10		Consilier	I	deb	0	1
	TOTAL					10

XV COMPARTIMENT INTERVENTIE IN REGIM DE URGENTA IN DOMENIUL ASISTENTEI SOCIALE ALE PERSOANELOR ADULTE

1		Consilier	I	principal	1	1
2		Consilier	I	principal	1	1
3		Consilier	I	principal	1	1
4		Consilier	I	asistent	1	1
5		Consilier	I	asistent	1	1
6		Consilier	I	asistent	1	1
7		Consilier	I	deb	0	1
8		Consilier	I	deb	0	1

	TOTAL					8
--	--------------	--	--	--	--	----------

XVI COMPARTIMENT ANTISARACIE SI PREVENIRE A MARGINALIZARII SOCIALE

1		Consilier	I	superior	1	1
2		Consilier	I	principal	3	1
3		Consilier	I	asistent	1	1
4		Consilier	I	deb	0	1
	TOTAL					4

XVII SERVICIUL FINANCIAR

1	Sef serviciu		I	superior	2	1
2		Consilier	I	superior	2	1
3		Consilier	I	superior	2	1
4		Consilier	I	superior	2	1
5		Consilier	I	superior	3	1
6		Consilier	I	principal	1	1
7		Consilier	I	principal	3	1
8		Referent	III	superior	3	1
	TOTAL					8

XVIII SERVICIUL CONTABILITATE

1	Sef serviciu		I	superior	1	1
2		Consilier	I	superior	1	1
3		Consilier	I	principal	1	1
4		Referent	III	superior	1	1
5		Referent	III	superior	3	1
6		Referent	III	superior	3	1
7		Referent	III	superior	3	1
8		Referent	III	superior	3	1
	TOTAL					8

XIX SERVICIUL ADMINISTRATIV

1	Sef serviciu	Inspector specialitate	S	1A		1
2		Inspector specialitate	S	1A		1
3		Inspector specialitate	S	I		1
4		Referent	M	1A		1
5		Referent	M	1A		1
6		Referent	M	II		1
7		muncitor(sofer)	G	III		1
8		muncitor(sofer)	G	III		1
9		muncitor(sofer)	G	III		1
10		muncitor(sofer)	G	III		1
11		Ingrijitor	G	I		1
	TOTAL					11

	Total functii publice				136
	Total personal contractual				14
	TOTAL PERSONAL DIRECTIE				150

II. Centre in domeniul protectiei copilului

Centrul de Primire a Copilului in Regim de Urgenta "Gavroche" Cluj-Napoca

I. CONDUCERE

1	Sef centru	Inspector specialitate	S	III		1
						1

II. SERVICIUL EDUCATIE SI INGRIJIRE

1		Referent specialitate	S	III		1
2		Referent specialitate	S	III		1
3		Referent specialitate	S	II		1
4		Inspector specialitate	S	I		1
5		Referent	M	I		1
6		Referent specialitate	S	III		1
7		Referent	M	I		1
8		Referent specialitate	S	III		1
9		Supraveghetor noapte	G			1
10		Supraveghetor noapte	G			1
	TOTAL					10

III. SERVICIUL ADMINISTRATIV GOSPODARESC

1	sef serviciu	Administrator	M	I		1
2		Muncitor (bucatar)	G	I		1
3		Muncitor (bucatar)	G	IV		1
4		Muncitor (fochist)	G	II		1
5		Ingrijitor	G	I		1
6		Ingrijitor	G	I		1
7		Ingrijitor	G	I		1
	TOTAL					7

	Total personal					18
--	-----------------------	--	--	--	--	-----------

Centrul de Plasament Nr.1 "Prichindel" Cluj-Napoca

I.CONDUCERE

1	Sef centru	Inspector specialitate	S	IA		1
	Total					1

II.SERVICIUL EDUCATIE SI ASISTENTA SOCIALA

1	sef serviciu	Inspector specialitate	S	1A	1
2		Referent specialitate	S	III	1
3		Referent specialitate	S	II	1
4	sef modul	Referent	M	II	1
5		Referent specialitate	S	II	1
6		Referent specialitate	S	II	1
7		Referent	M	I	1
8		Referent	M	II	1
9		Referent	M	III	1
10		Infirmiera	G		2
11		Supraveghetor noapte	G		2
12		Ingrijitor	G	I	1
13	sef modul	Inspector specialitate	S	I	1
14		Referent specialitate	S	II	1
15		Referent	M	I	1
16		Referent	M	II	1
17		Referent	M	I	1
18		Referent specialitate	S	III	1
19		Infirmiera	G		2
20		Supraveghetor noapte	G		2
21		Ingrijitor	G	I	1
22	sef modul	Referent	M	1A	1
23		Referent specialitate	S	III	1
24		Referent specialitate	S	II	1
25		Referent	M	I	1
26		Referent	M	III	1
27		Infirmiera	G		1
28		Infirmiera	G		1
29		Infirmiera	G		1
30		Supraveghetor noapte	G		1
31		Supraveghetor noapte	G		1
32		Ingrijitor	G	I	1
33	sef modul	Referent	M	II	1
34		Referent specialitate	S	III	1
35		Referent specialitate	S	II	1
36		Referent	M	III	1
37		Referent	M	II	1
38		Referent	M	I	1
39		Infirmiera	G		3
40		Supraveghetor noapte	G		2
41		Ingrijitor	G	I	1

42	sef modul	Referent	M	1A		1
43		Referent specialitate	S	III		1
44		Referent specialitate	S	II		1
45		Referent	M	I		1
46		Referent	M	III		1
47		Referent	M	I		1
48		Referent	M	II		1
49		Referent	M	II		1
50		Supraveghetor noapte	G			3
51		Ingrijitor	G	I		1
52	sef modul	Inspector specialitate	S	I		1
53		Referent specialitate	S	III		1
54		Referent specialitate	S	II		1
55		Referent	M	II		1
56		Infirmiera	G			3
57		Supraveghetor noapte	G			2
58		Ingrijitor	G	I		1
	Total					70

III. SERVICIUL MEDICAL

1		Medic primar	S			2
2		Asistent medical principal	PL			3
3		Asistent medical	PL			1
4		Asistent medical principal	M			1
	Total					7

IV.SERVICIUL ADMINISTRATIV

1	sef serviciu	Referent	M	1A		1
2		Referent	M	I		1
3		Referent	M	1A		1
4		Magazioner	M	I		1
5		Muncitor(sofer)	G	II		1
6		Muncitor(sofer)	G	III		1
7		Muncitor(sofer)	G	II		1
8		Muncitor(sofer)	G	I		1
9		Asistenta Med (dietetician)	PL			1
10		Muncitor (buc)	G	VI		1
11		Muncitor (buc)	G	III		1
12		Muncitor (buc)	G	VI		1
13		Muncitor (buc)	G	IV		1
14		Muncitor (buc)	G	V		1
15		M. Necalif (buc)	G			1
16		M. Necalif (spal)	G			3

17		Ingrijitor	G	I		1
18		Muncitor (lenj)	G	IV		1
19		Muncitor(fochist)	G	III		1
20		Muncitor(fochist)	G	II		1
21		Muncitor (mec)	G	I		1
22		Muncitor(electrician)	G	II		1
23		Muncitor (timplar)	G	I		1
24		Muncitor (zugrav)	G	II		1
	Total					26

	Total personal centru					104
--	------------------------------	--	--	--	--	------------

**Complex de servicii pentru recuperarea copiilor cu tulburari
de Comportament Nr.2 "Oblio"**

I. CONDUCERE

1	Sef centru	Medic specialist	S			1
	Total					1

II SERVICIUL DE EDUCATIE SI INGRIJIRE A COPILULUI

1		Referent specialitate	S	III		1
2		Referent specialitate	S	III		1
3		Ref. Spec.(psiholog)	S	II		1
4		Ref. Spec.(psihoped)	S	II		1
5		Kinetoterapeut	S			1
6		Referent specialitate	S	II		1
7		Referent specialitate	S	III		1
8		Referent specialitate	S	II		1
9		Referent	M	II		1
10		Referent	M	III		1
11		Asistent medical principal	PL			1
12		Supraveghetor noapte	G			2
	Total					13

III SERVICIUL ADMINISTRATIV GOSPODARESC

1	sef serviciu	Administrator	M	I		1
2		Muncitor (bucatarie)	G	II		1
3		Muncitor (bucatarie)	G	III		1
4		Muncitor (sofer)	G	II		1
5		Munitor nec(spalat)	G			1
6		Ingrijitoare	G	I		2
	Total					7

b	Total personal centru					21
----------	------------------------------	--	--	--	--	-----------

Centrul de Plasament Nr.3 "Casa Piticilor" Gherla

I. CONDUCERE

1	Sef centru	Inspector specialitate	S	1A		1
	Total					1

II. SERVICIUL DE EDUCATIE SI INGRIJIRE A COPILULUI

1		Referent specialitate	S	I		1
2		Referent specialitate	S	II		1
3		Referent specialitate	S	II		1
4		Referent specialitate	S	III		1
5		Referent specialitate	S	I		1
6		Referent specialitate	S	I		1
7		Supr. Noapte	G			5
	Total					11

III. SERVICIUL CONSILIERE , ASISTENTA SOCIALA, MEDICALA, SECRETARIAT

1		Asist. Medicala principala	PL			1
	Total					1

IV. SERVICIUL ADMINISTRATIV GOSPODARESC

1		Administrator	M	I		1
2		Ingrijitor	G	I		1
3		Ingrijitor	G	I		1
4		Muncitor intretinere	G	III		1
5		Muncitor (Buc.)	G	IV		1
6		Muncitor (Buc.)	G	IV		1
7		Muncitor (Buc.)	G	VI		1
8		M. Necalif(Spal)	G			1
	Total					8

b	Total personal centru	CP3				21
----------	------------------------------	------------	--	--	--	-----------

Centrul de plasament nr. 6 "Sf. Andrei" Jucu

I. CONDUCERE

1	Sef centru	Inspector de specialitate	S	1A		1
	Total					1

II. SERVICIUL DE EDUCATIE SI INGRIJIRE A COPILULUI

1		Referent	M	II		5
2		Referent	M	III		1
	Total					6

III. SERVICIUL CONSILIERE , ASISTENTA SOCIALA, MEDICALA

1		Referent specialitate	S	III		1
---	--	-----------------------	---	-----	--	---

2		Ref. specialitate(as soc)	S	III		1
3		Medic specialist	S			1
4		Asistent medical principal	PL			3
6		Asistent medical	PL			2
7		Infirmiera	G			23
	Total					31

IV SERVICIUL ADMINISTRATIV GOSPODARESC

1		Referent	M	I		1
2		Administrator	M	I		1
3		Magaziner	M	I		1
4		Muncitor(sofer)	G	II		1
5		Muncitor(fochist)	G	V		1
6		Muncitor(fochist)	G	VI		1
7		Muncitor(fochist)	G	II		1
8		Muncitor(intretinere)	G	III		1
9		Muncitor(buc)	G	VI		1
10		Muncitor(buc)	G	II		1
11		Muncitor(buc)	G	II		1
12		Muncitor necalificat(buc)	G			1
13		Ingrijitor	G	I		1
14		Munc necalif (spal)	G			1
15		Munc necalif (spal)	G			1
	Total					15

	Total personal centru	CP6				53
--	------------------------------	------------	--	--	--	-----------

Centrul de plasament nr. 8 "Speranta" Huedin

I. CONDUCERE

1	sef centru	inspector de specialitate	S	IA		1
	Total					1

II. SERVICIUL DE EDUCATIE SI INGRIJIRE A COPIILULUI

1		Referent(educator)	M	II		1
2		Referent(educator)	M	II		1
3		Referent(educator)	M	II		1
4		Referent(educator)	M	II		1
5		Referent(educator)	M	II		1
6		Referent(educator)	M	II		1
7		Referent(educator)	M	II		1
8		Referent(educator)	M	II		1
9		Referent(educator)	M	II		1
10		Suprav Noapte	G			8

	Total					17
--	--------------	--	--	--	--	-----------

III. SERVICIUL CONSILIERE , ASISTENTA SOCIALA, MEDICALA

1		Referent de specialitate	S	III		1
2		Referent(psiholog)	M	III		1
3		Asistent medical principal	PL			2
4		Infirmiera	G			3
	Total					7

IV SERVICIUL ADMINISTRATIV GOSPODARESC

1	sef serviciu	Referent	M	1A		1
2		Administrator	M	I		1
3		Magaziner	M	I		1
4		Ingrijitor	G	I		4
5		Muncitor(spal)	G	IV		1
6		Muncitor(spal)	G	V		1
7		Muncitor(lenj)	G	IV		1
8		Muncitor(lenj)	G	VI		1
9		Muncitor intretinere	G	II		1
10		Muncitor(fochist)	G	III		1
11		Muncitor(fochist)	G	III		1
12		Muncitor(fochist)	G	II		1
13		Muncitor(buc)	G	II		1
14		Muncitor(buc)	G	II		1
15		Muncitor(buc)	G	II		1
16		Muncitor(buc)	G	II		1
17		Muncitor(buc)	G	III		1
18		Muncitor(buc)	G	III		1
	Total					21

	Total personal centru	CP8				46
--	------------------------------	------------	--	--	--	-----------

Complex de servicii pentru recuperarea copiilor cu handicap neuropsihic usor si mediu nr. 9 "Tandarica" Cluj-Napoca

I. CONDUCERE

1	sef centru	medic	S			1
1	Total					1

II SERVICIUL DE INGRIJIRE A COPIILUI

1		Ref. de sp.(Psihoped)	S	II		1
2		Profesor CFM principal	S	princip		1
3		Ref sp. (Logoped)	S	I		1
4		Referent de specialitate	S	III		1
5		As. Medicala principala	PL			1
6		Sora medicala principala	M			1

7		Referent	M	II		1
8		Referent specialitate	S	II		3
9		Referent	M	II		1
10		Referent	M	III		1
11		Supraveghetor noapte	G			2
	Total					14

III SERVICIUL ADMINISTRATIV GOSPODARESC

1	sef serviciu	Administrator	M	I		1
2		Muncitor (bucatarie)	G	VI		1
3		Muncitor (bucatarie)	G	III		1
4		Muncitor (intretinere)	G	II		1
5		M. necalif (spalatorie)	G			1
6		Infirmiera	G			1
7		Ingrijitor	G	II		1
	Total					7

	Total posturi centru	CP9				22
--	-----------------------------	------------	--	--	--	-----------

Complex de servicii pentru recuperarea copiilor cu handicap neuropsihic sever nr. 10 "Pinochio" Cluj-Napoca

I. CONDUCERE

1	sef centru	medic primar	S			1
1	Total					1

II SERVICIUL DE EDUCATIE SI INGRIJIRE A COPILULUI

1		Kinetoterapeut(cfm)	S			1
2		Asistent medical	PL			1
3		Referent spec(logoped)	S	II		1
4		Medic specialist	S			1
5		Asistent medical	PL			4
6		Referent	SSD			1
7		Referent	M			2
8		Infirmiera	G			5
	Total					16

IV. SERVICIUL ADMINISTRATIV

1	sef serviciu	Administrator	M	I		1
2		Muncitor (bucatarie)	G	IV		1
3		Muncitor (bucatarie)	G	IV		1
4		Muncitor (intretinere)	G	II		1
5		Ingrijitor	G	I		1
	Total					5

	Total personal centru	CP10				22
--	------------------------------	-------------	--	--	--	-----------

Centrul de zi si maternal "Spiridus" Cîmpia Turzii

1	sef centru	Referent specialitate	S	III		1
2		Referent specialitate	S	II		1
3		Sora medicala principal	M	0		1
4		Referent	M	1A		1
5		Referent	M	II		1
6		Referent	M	II		1
7		Referent	M	III		1
8		Administrator	M	I		1
9		Muncitor (bucatarie)	G	III		1
10		Muncitor (bucatarie)	G	V		1
11		Ingrijitor	G	II		1
	TOTAL					11

Centrul maternal "Luminita" Cluj-Napoca

1	sef centru	Referent specialitate	S	II		1
2		Referent specialitate	S	III		1
3		Referent specialitate	S	III		1
4		Referent	M	II		1
	TOTAL					4

Case de tip familial Apahida si Floresti

1		Referent (parinte social)	M	II		1
2		Referent (parinte social)	M	II		1
3		Referent (parinte social)	M	II		1
4		Referent (parinte social)	M	II		1
5		Referent (parinte social)	M	II		1
6		Infirmiera (parinte social)	G			1
7		Referent (parinte social)	M	II		1
8		Referent (parinte social)	M	II		1
	TOTAL	Case fam				8

Centre de Asistenta si Sprijin pentru Tineri

1		Ref spec (as soc)	S	III		1
2		Ref. de sp.(Psiholog)	S	III		1
3		Referent sp (educator)	S	II		1
4		Supraveghetor noapte	G			2
6		Administrator 1/2 norma	M	I		0,5
7		Ref. de specialitate	S	I		1
8		Ref spec (as soc)	S	III		1

9		Ref spec (educator)	S	III		1
10		Supraveghetor noapte	G			2
12		Administrator 1/2 norma	M	II		0,5
	Total posturi centru	CAST				11

„Eu si familia mea” Huedin

I SERVICIUL DE INGRIJIRE A COPILULUI

1	sef centru	Referent specialitate	S	III		1
2		Referent spec(as social)	S	II		1
3		Referent spec(as social)	S	II		1
4		Referent (educator)	M	II		1
5		Referent (educator)	M	II		1
6		Referent (educator)	M	I		1
7		Referent (educator)	M	I		1
8		Referent (educator)	M	I		1
9		Referent (educator)	M	I		1
10		Supraveghetor noapte	G			6
	Total					15

II SERVICIUL ADMINISTRATIV GOSPODARESC

1		Administrator	M	I		1
2		Ingrijitor	G	I		1
3		Ingrijitor	G	I		1
4		Ingrijitor	G	I		1
	Total					4

	Total posturi centru	Case Huedin				19
--	-----------------------------	--------------------	--	--	--	-----------

Centrul Judetean de Interventie pentru Copilul Abuzat Cluj-Napoca

I ADAPOST PENTRU COPII "Perlino"

1	sef centru	Inspector specialitate	S	I		1
2		Referent(asistent soc)	S	II		1
3		Referent(psiholog)	S	III		1
4		Referent sp. (educator)	S	III		1
5		Referent sp. (educator)	S	III		1
6		Referent sp. (educator)	S	II		1
7		Referent (educator)	M	III		1
8		Referent spec(educator)	S	III		1
6		Asistent medical principal	PL			1
9		Administrator	M	I		1
10		muncitor(bucatar)	G	II		1
11		muncitor(bucatar)	G	V		1

12		muncitor necalificat(spal)	G			1
	Total					13

II COMPLEX SERVICII

1		Ref spec (As social)	S	I		1
2		Referent (As social)	S	II		1
3		Referent (As social)	S	III		1
4		Referent (psiholog)	S	II		1
5		Referent (psiholog)	S	II		1
6		Infirmiera	G			1
	Total					6

III ASISTENTI MATERNALI

1		Asistent maternal	M			6
	Total					6

	Total posturi centru					25
--	-----------------------------	--	--	--	--	-----------

Adapost de zi si noapte pentru copiii strazii "Arlechino"

1		Referent specialitate	S	III		1
2		Referent specialitate	S	III		1
3		Referent specialitate	S	III		1
4		Referent	M	III		1
5		Supraveghetor noapte	G			2
6		Administrator	M	I		1
7		Muncitor calificat	G	III		1
8		Muncitor calificat	G	III		1
9		Ingrijitoare	G	I		1
10		Infirmiera	G			1
	Total		0	0		11

Unitati de tip familial Turda

I Apartamente

1	sef serviciu	Referent(asistent soc)	S	II		1
2		Referent(psiholog)	S	III		1
3		Referent sp. (educator)	S	II		3
4		Referent sp. (educator)	S	III		3
5		Referent (educator)	M	I		4
6		Referent (educator)	M	II		5
7		Referent (educator)	M	III		5
8		Referent (contabil)	M	1A		1
9		Asistent medical principal	PL			1
10		muncitor	G	I		1

	Total					25
III ASISTENTI MATERNALI						
1		Asistent maternal	M			5
	Total					5
Total posturi centru						30

Case de tip familial Gherla

1	Sef centru	Inspector specialitate	S	I		1
2		Referent(asistent soc)	S	I		1
3		Referent(Psiholog)	S	I		1
4		Referent sp. (educator)	S	I		4
5		Referent sp. (educator)	S	II		4
6		Referent sp. (educator)	S	III		4
7		Referent (educator)	M	I		4
8		Referent (educator)	M	II		4
9		Referent (contabil)	M	1A		1
10		Administrator	M	I		1
11		Muncitor(sofer)	G	I		1
	Total posturi centru					26

Unitati de tip familial Gherla (apartamente)

1		Referent sp. (educator)	S	I		8
2		Referent (educator)	M	I		8
3		Referent (educator)	M	II		4
4		Muncitor(sofer)	G	I		1
	Total posturi centru					21

III. Centre de ingrijire si asistenta pentru adulti

Centrul pentru persoane varstnice Recea Cristur

I. CONDUCERE

1	sef centru	Inspector specialitate	1A			1
	Total					1

II. SERVICIUL MEDICO SOCIAL

1		Asistent medical	PL			2
2		Asistent med principal	PL			2
3		Asistent social	M			1
4		Infirmiera	G			4

	Total					9
--	--------------	--	--	--	--	----------

III. SERVICIUL ADMINISTRATIV

1	Referent	M	II		1
2	Administrator	M	I		1
3	Magaziner	M;G	II		1
4	Muncitor (bucatarie)	G	VI		1
5	Muncitor (bucatarie)	G	VI		1
6	Muncitor intretinere	G	II		1
7	(spalatorie)	G			1
8	Ingrijitor	G	II		1
9	Ingrijitor	G	II		1
10	Paznic	G	I		3
	Total				12

	Total personal centru	Recea				22
--	------------------------------	--------------	--	--	--	-----------

Centrul de ingrijire si asistenta Cluj Napoca

I. CONDUCERE

1	sef centru	Medic				1
	Total					1

II. SERVICIUL MEDICAL

1	Medic primar	S			1
2	Psiholog	S			1
3	Asistent social	S			1
4	Asistent medical	SSD			1
5	Asistent medical	PL			4
6	Asistent medical principal	PL			8
7	Asistent Fiziot. Pr	PL			1
8	Maseur				1
	Total				18

III. SERVICIUL DE INGRIJIRE

1	Infirmiera	G			33
2	Ingrijitor Curatenie	G			11
3	Spalatoreasa	G			6
4	Munc cal (Lenjereasa)	G	IV		1
5	Munc cal (Lenjereasa)	G	III		1
	Total				52

IV.SERVICIUL ADMINISTRATIV

1	sef serviciu	Referent	M	1A		1
2		Referent	M	1A		1

3	Administrator	M	I		1
4	Magaziner-Casier	M	I		1
5	Muncitor(Bucatar)	G	II		1
6	Muncitor(Bucatar)	G	II		1
7	Muncitor Bucatarie	G			1
8	Muncitor Bucatarie	G			1
9	Muncitor Bucatarie	G			1
10	Muncitor Bucatarie	G			1
11	Electrician	G	I		1
12	Tamplar	G	IV		1
13	Muncitor Frizer	G	IV		1
14	Muncitor Necalificat	G			1
15	Muncitor Necalificat	G			1
16	Paznic	G	I		4
	Total				19

	Total posturi centru				90
--	-----------------------------	--	--	--	-----------

Centrul de ingrijire si asistenta Luna de Jos

I. CONDUCERE

1	sef centru	Medic	S		1
	Total				1

II. SERVICIUL MEDICAL

1	sef serviciu	Asist Med.Princ Sef	PL		1
2		Medic	S		1
3		Psiholog	S		1
4		Asistent Med.Princip	PL		2
5		Asistent Medical	PL		5
6		Sora Medicala	M		1
7		Maseur	M		1
8		Asistent Social	PL		1
9		Asistent fizioterapeut	M		1
	Total				14

III. SERVICIUL DE INGRIJIRE

1		Infirmier	G		41
2		Ingrijit.Curatenie	G		10
3		Spalatoreasa	G		1
4		Spalatoreasa	G		1
5		Spalatoreasa	G		1
6		Lenjereasa	G		1
	Total				55

IV.SERVICIUL ADMINISTRATIV

1	sef serviciu	Referent	M	I		1
2		Referent	M	I		1
3		Referent	M	II		1
4		Magazioner	M;G	II		1
5		Administrator	M	III		1
6		Muncitor –Bucatar	G	IV		1
7		Muncitor –Bucatar	G	IV		1
8		Muncitor Nec.Bucatar	G			4
10		Muncitor-Tamplar	G	V		1
11		Muncitor –Mecanic	G	II		1
13		Muncitor-Electrici	G	I		1
14		Muncitor –Fochist	G	II		1
15		Muncitor –Fochist	G	II		1
16		Muncitor –Fochist	G	III		1
17		Muncitor –Fochist	G	IV		1
18		Portar	G	I		4
19		muncitor(Sofer)	G	I		1
20		Muncitor Necalificat	G			3
21		Sef Formatie Pompier	M			1
	Total					27

	Total posturi centru	CIA Luna				97
--	-----------------------------	-----------------	--	--	--	-----------

Centrul de ingrijire si asistenta Catcau**I. CONDUCERE**

1	sef centru	asistent social principal	S			1
	Total					1

II. SERVICIUL MEDICAL

1	sef serviciu	Asistent Sef	M	0		1
2		Medic	S			1
3		Asistent Medical principal	PL			3
4		Asistent Medical	PL			3
5		Kinetorapeut	S			1
6		Ergoterapeut	S			1
7		Fizioterapeut	S			1
8		Asistent social	S			1
9		Psiholog	S			1
	Total					13

III. SERVICIUL DE INGIJIRE

1	Infirmier	G			39
2	Spalatoreasa	G			4
3	Lenjereasa	G	IV		1
4	Ingrijitor Curatenie	G			5
	Total				49

IV.SERVICIUL ADMINISTRATIV

1	sef serviciu	Referent	M	1A		1
2		Administrator	M	I		1
3		Referent	M	I		1
4		Referent	M	I		1
5		Magaziner	M	I		1
6		Muncitor calificat –bucatar	G	I		1
7		Muncitor calificat –bucatar	G	II		1
8		Muncitor calificat –bucatar	G	II		1
9		Muncitor Necalificat	G			4
10		Muncitor Calificat	G	I		1
11		Muncitor Calificat	G	II		1
12		Portar	G	I		4
13		Muncitor calificat	G	VI		1
14		Muncitor Necalificat	G			5
15		muncitor(Sofer)	G	I		1
	Total					25

	Total posturi centru					88
--	-----------------------------	--	--	--	--	-----------

Centrul de ingrijire si asistenta Mociu

I. CONDUCERE

1	sef centru	Preot	S	I		1
	Total					1

II. SERVICIUL MEDICAL SI INGRIJIRE

1		Sora medicala pr.	M	0		1
2		Asistent social	S			1
3		Infirmiera	G			3
	Total					5

IV.SERVICIUL ADMINISTRATIV

1		Referent	M	II		1
2		Administrator	M	II		0,5
3		muncitor(Sofer)	G	II		0,5
4		muncitor(Bucatar)	G	V		1
5		Muncitor Bucatarie	G			1

6	Spalatoarea	G			1
7	Ingrijitor Curatenie	G			1
8	Paznic	G	II		1
9	Paznic	G	II		1
10	Paznic	G	I		1
11	Muncitor Calificat	G	V		1
Total					10

Total posturi centru					16
-----------------------------	--	--	--	--	-----------

Complex de servicii comunitare destinat persoanelor adulte Cimpia Turzii

I. Serviciul pentru femeile si copiii expusi violentei domestice

1	sef centru	Referent specialitate	S	I		1
2		Referent specialitate(as social)	S	II		1
3		Referent (educator)	S	I		1
4		Referent specialitate(psiholog)	S	II		1
Total					4	

II. Centru de criza

1		Ref specialitate(as social)	S	II		1
2		Asistent Medical	PL			2
3		Infirmiera	G			2
4		Supraveghetor de noapte	G			2
5		Ingrijitor Curatenie	G			1
Total					8	

III.SERVICIUL ADMINISTRATIV

1	sef serviciu	Referent	M	1A		1
2		Administrator	M	I		1
3		Muncitor Bucatarie	G	III		2
4		Muncitor bucatarie	G	IV		2
5		Muncitor intretinere	G	V		1
Total					7	

Total posturi centru					19
-----------------------------	--	--	--	--	-----------

Centrul de Recuperare Reabilitare Tineri cu Handicap Gherla

I. CONDUCERE

1	sef centru	inspector de specialitate	S	1A		1
Total					1	

II. SERVICIUL MEDICAL SI INGRIJIRE

1		Medic primar	M			1
2		Referent spec (as social)	PL			1

3		Referent spec (psiholog)	PL			1
4		Ergoterapeut	PL			1
5		Asistent Medical principal	PL			4
6		Infirmiera	G			14
	Total					22

III.SERVICIUL ADMINISTRATIV

1		Referent	M	I		1
2		Administrator	M	II		1
3		Muncitor Bucatarie	G	III		3
4		Spalatoreasa	G	II		2
5		Ingrijitor Curatenie	G			3
6		Muncitor Calificat	G	V		1
	Total					11

	Total posturi centru					34
--	-----------------------------	--	--	--	--	-----------

IV.ASISTENTI MATERNALI

1		Asistent maternal	M			205
	Total					205

1	Aparat propriu					150
2	Centre protectia copilului					473
3	Centre ingrijire si asistenta					366
4	Asistenti maternali					205
	Total DGASPC					1194